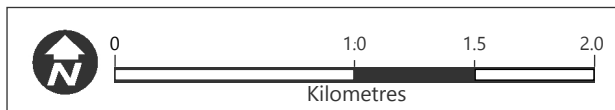
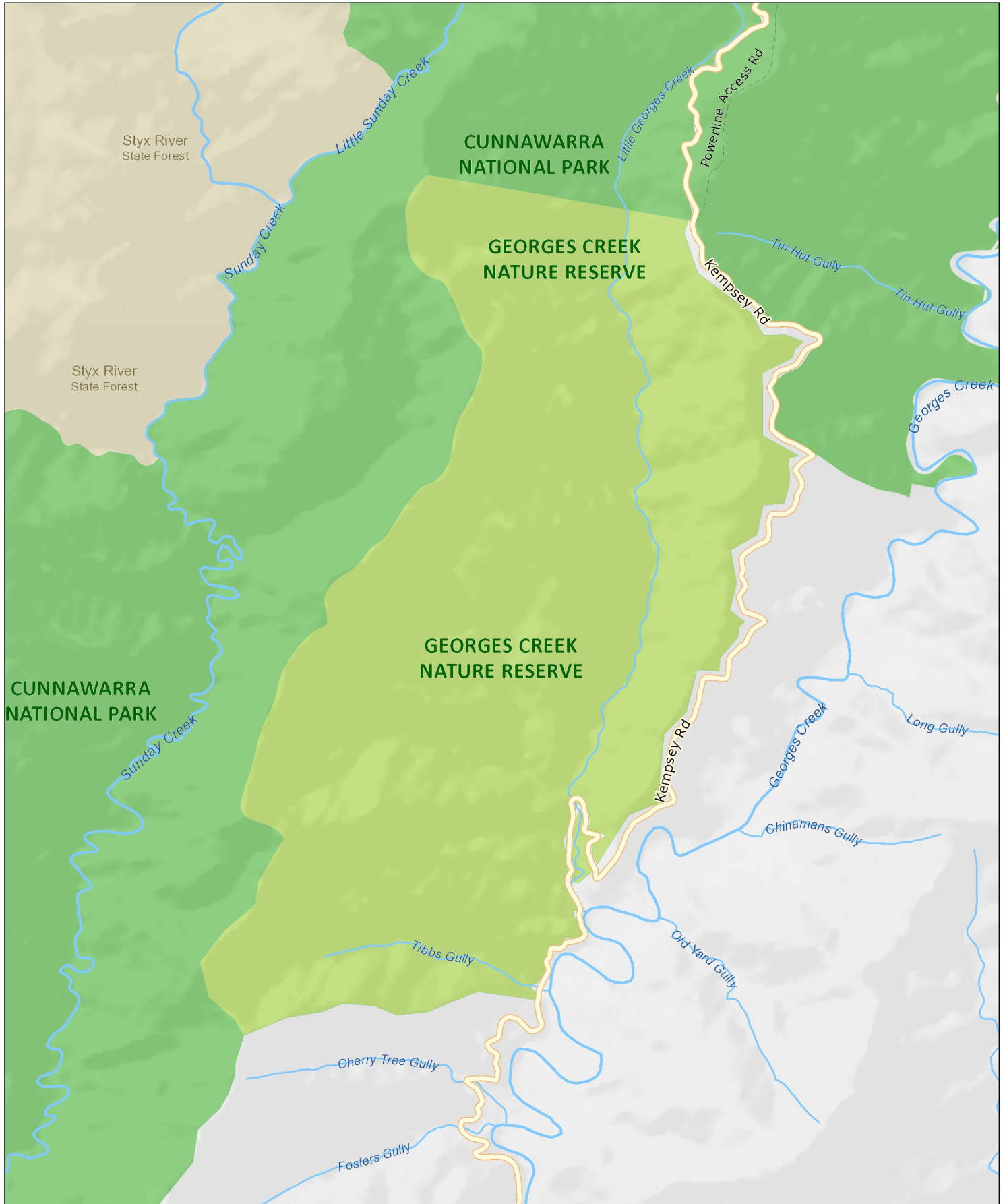




Georges Creek Nature Reserve

Overview map



MAP INFORMATION

This map does not provide detailed information on topography, alerts or opening times and may not be suitable for some activities.
Map Published: 29-Apr-2021



 Feature Park/section	 Other NPWS reserve	 Mount/Peak/Hill	 Waterfall
 Track	 Management trail (no motor vehicle access)	 Motorway	 Primary road
 Arterial road	 Sub-arterial road	 Distributor road	 Local road
 Sealed road	 Unsealed road	 Feature route	 Railway
 Watercourse	 Waterbody	 Marine Park/ Aquatic Reserve	 Firearms range/ Danger area
Attractions and activities		Facilities	
 Aboriginal site	 Adventure sports location	 Accommodation	 Train station
 Birdwatching spot	 Boating location	 Boat ramp	 Bus station
 Campground	 Canoe/Kayak location	 Café/kiosk	 Ferry wharf
 Cave entrance	 Fishing spot	 Education centre	 Airport
 Historic site	 Lookout	 Picnic area	Warnings
 Snow sports facility	 Surfing spot	 Venue	 Gate – may be locked
 Swimming spot	 Visitor centre		 Warning
 Canoe/Kayak route	 Car touring route		
 Cycling trail	 Horse riding trail		
 Snow trail	 Walking track		
 4WD touring route			

Photo: Mount Kaputar National Park (Simone Cottrell/DFWE)

Explore the NSW
National Parks
 app

Download your next adventure

Get GPS-enabled maps and information on over 225 national parks in the NSW National Parks app. Download a park to navigate its map without an internet connection.

GET IT ON
 Google Play

Download on the
 App Store

nswparks.info/app