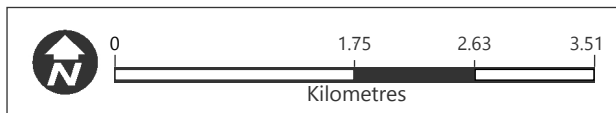
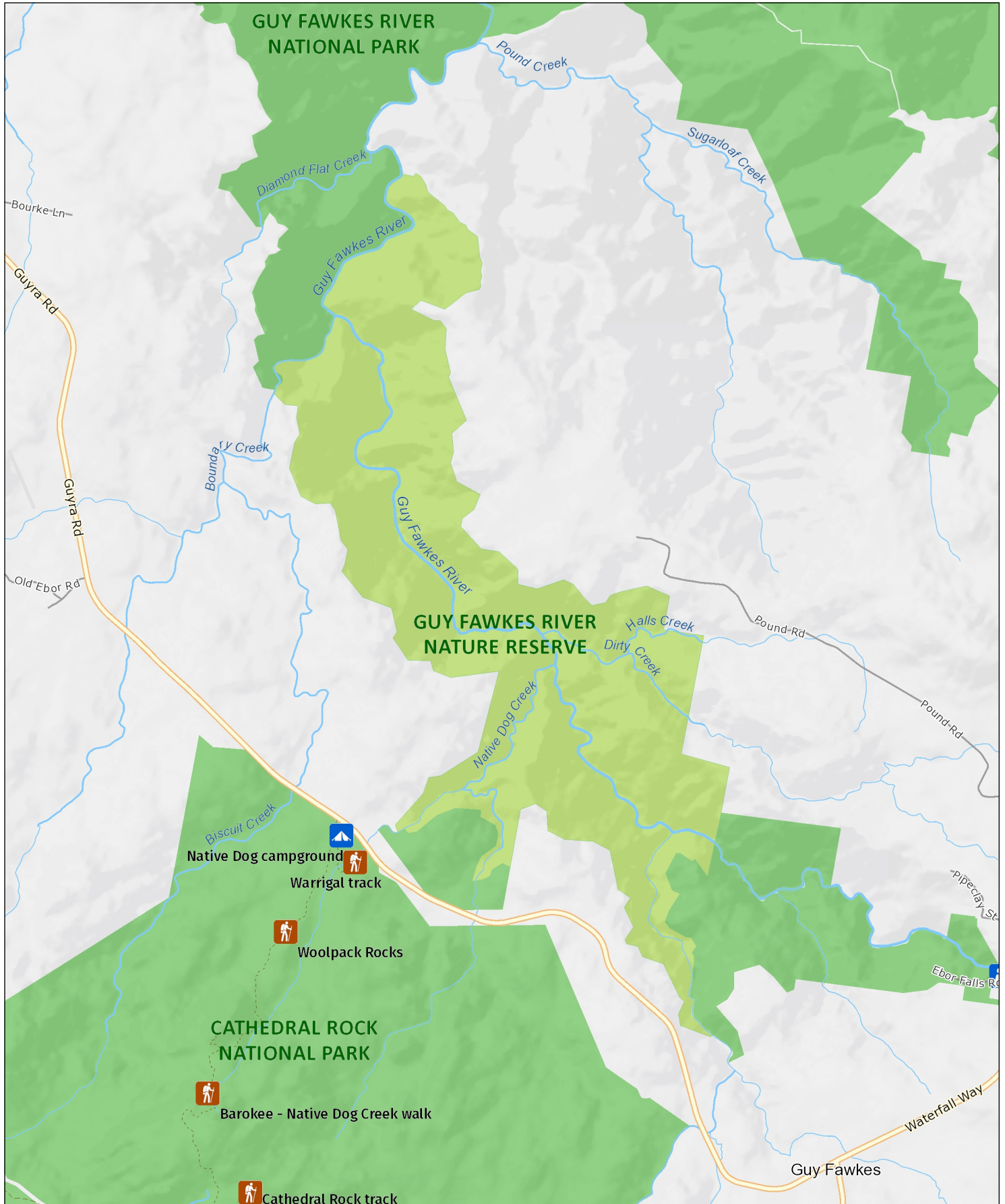




Guy Fawkes River Nature Reserve

Overview



MAP INFORMATION
This map does not provide detailed information on topography, alerts or opening times and may not be suitable for some activities.
Map Published: 29-Sep-2021



| | | | |
|---|---|---|--|
|  Feature Park/section |  Other NPWS reserve |  Mount/Peak/Hill |  Waterfall |
|  Track |  Management trail (no motor vehicle access) |  Motorway |  Primary road |
|  Arterial road |  Sub-arterial road |  Distributor road |  Local road |
|  Sealed road |  Unsealed road |  Feature route |  Railway |
|  Watercourse |  Waterbody |  Marine Park/ Aquatic Reserve |  Firearms range/ Danger area |
| Attractions and activities | | Facilities | |
|  Aboriginal site |  Adventure sports location |  Accommodation |  Train station |
|  Birdwatching spot |  Boating location |  Boat ramp |  Bus station |
|  Campground |  Canoe/Kayak location |  Café/kiosk |  Ferry wharf |
|  Cave entrance |  Fishing spot |  Education centre |  Airport |
|  Historic site |  Lookout |  Picnic area | Warnings |
|  Snow sports facility |  Surfing spot |  Venue |  Gate – may be locked |
|  Swimming spot |  Visitor centre | |  Warning |
|  Canoe/Kayak route |  Car touring route | | |
|  Cycling trail |  Horse riding trail | | |
|  Snow trail |  Walking track | | |
|  4WD touring route | | | |

Photo: Mount Kaputar National Park (Simone Cottrell/DFIE)

Explore the NSW
National Parks
 app

Download your next adventure

Get GPS-enabled maps and information on over 225 national parks in the NSW National Parks app. Download a park to navigate its map without an internet connection.

GET IT ON
 Google Play

Download on the
 App Store

nswparks.info/app